





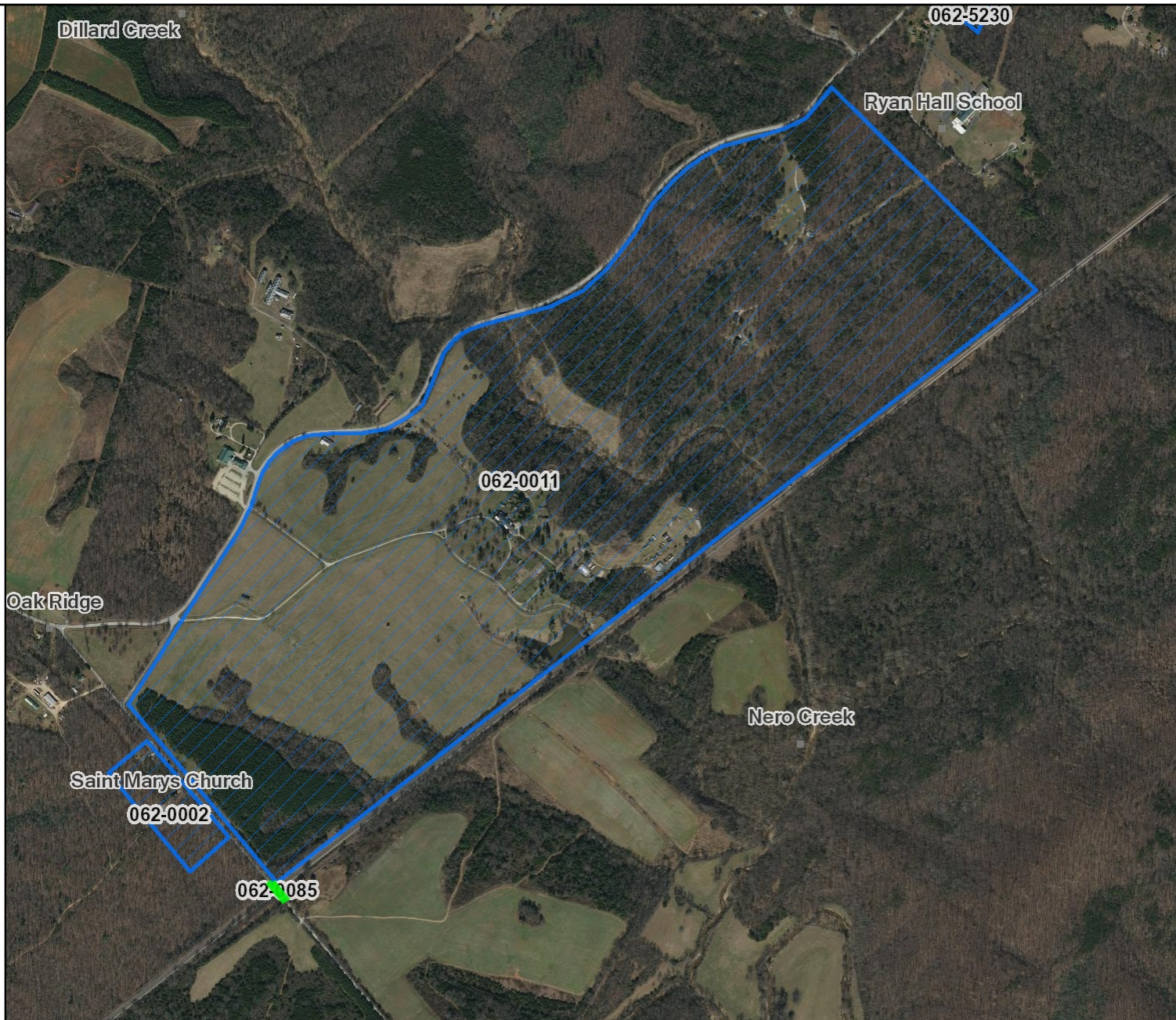


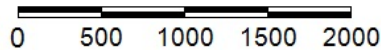


Legend

-  Architecture Resources
- Architecture Labels
-  Individual Historic District Properties
-  Archaeological Resources
- Archaeology Labels
-  DHR Easements
-  USGS GIS Place names
-  County Boundaries



Feet



1:18,056 / 1"=1,505 Feet

Title: Oak Ridge Historic District

Date: 2/7/2020

DISCLAIMER: Records of the Virginia Department of Historic Resources (DHR) have been gathered over many years from a variety of sources and the representation depicted is a cumulative view of field observations over time and may not reflect current ground conditions. The map is for general information purposes and is not intended for engineering, legal or other site-specific uses. Map may contain errors and is provided "as-is". More information is available in the DHR Archives located at DHR's Richmond office.

Notice if AE sites: Locations of archaeological sites may be sensitive the National Historic Preservation Act (NHPA), and the Archaeological Resources Protection Act (ARPA) and Code of Virginia §2.2-3705.7 (10). Release of precise locations may threaten archaeological sites and historic resources.